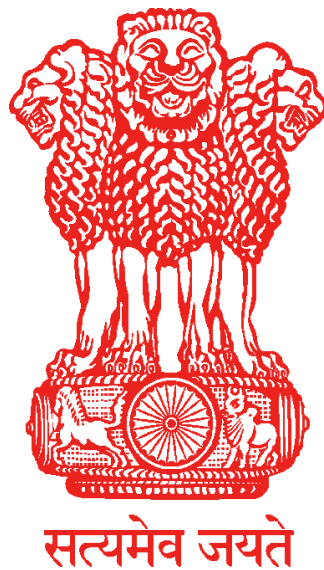


National Mission on Natural Farming



Operational Guidelines

**Integrated Nutrient Management Division
Department of Agriculture, & Farmers Welfare
Ministry of Agriculture & Farmers Welfare
Krishi Bhavan, New Delhi – 110 001**

1. About Natural Farming (NF)

- 1.1** Natural Farming is a chemical free farming, involving livestock (preferably local breed of cow) integrated natural farming methods and diversified crop systems rooted in the Indian traditional knowledge. It is aimed towards improving soil health and restoring ecosystems and reducing input cost to the farmer to achieve greater climate resilience. NF recognises the interdependence of the natural ecosystem amongst soil, water, microbiome, plants, animals, climate and human requirements.
- 1.2** Natural farming is integrated with livestock (preferably local breed of cow), involves use of on-farm inputs like Beejamrut, Jeevamrut, Ghan Jeevamrut, Neemastra, Dashparni, etc., multi-cropping systems, Pre-monsoon dry sowing, biomass based mulching, use of traditional varieties of seeds, integration of trees on buffer zones of farm, etc. NF practices improves soil structure, nutrition & soil organic carbon, enhances moisture retention & water holding capacity, promotes crop diversification and encourages natural habitats that enhance the on-farm biodiversity. NF follows local agro-ecological principles rooted in local knowledge and location specific technologies. On-farm innovations like application of multi-species green manure, farm made manure, compost, etc. are emerging along with the other components.
- 1.3** Knowledge of Natural Farming which is being practiced by farmers across the country, is traditionally built within the farmers and their communities. To leverage this, NMNF will enable a decentralized cross learning ecosystem blending the traditional NF knowledge of practicing farmers and the communities with the scientific approaches evolved in the Agricultural Universities (AUs) / Krishi Vigyan Kendras (KVKs) / ICAR Institutions, etc.

2. Need

- 2.1** The green revolution technologies have revolutionized food production and transformed the Indian agriculture from subsistence to a surplus generating enterprise. Now, there is a need for exploring alternative agricultural systems that are more sustainable and offer better climate resilience.
- 2.2** Natural Farming is a highly location specific farming system. The transition period towards natural farming depends on the organic carbon content of the soil, practice of all NF packages of practices, cropping system adopted, local agro-ecology, among others. For example, in soil with organic carbon content higher than 1%, the

transition to natural farming is faster in comparison to soils with lower soil organic carbon. Similarly, the transition period is quicker in rainfed agriculture areas than in irrigated regions due to factors such as high chemical input use.

- 2.3 A planned transition towards a mass movement (*Jan Bhagidari*) for natural farming needs to be scientifically backed up and requires dedicated long term investment on the capacities/ knowledge of the scientific research and extension systems. A robust knowledge extension needs to be established to provide necessary support to the farmers, community based organisations (CBO) such as Self Help Groups (SHG), Village organizations (VO), Primary Agricultural Credit Society (PACS), Farmer Producer Organisations (FPOs), etc. Close collaboration with practicing NF farmers/ communities, Local NF Institutions (LNFI) are essential for such a transition.
- 2.4 In order to institutionally root the transition process, it is essential to have location specific solutions, scientifically backed knowledge based extension, reorientation of research towards local agroecology and on-farm research with both scientists and farmers.

3. Chemical Free Farming Systems

- 3.1 The Government of India is promoting chemical-free farming systems of agriculture through Mission Organic Value Chain Development for North Eastern Region (MOVCDNER), Paramparagat Krishi Vikas Yojna (PKVY), and NF under a sub-scheme of PKVY - Bhartiya Prakratik Krishi Paddhati (BPKP).
- 3.2 Now, Department of Agriculture & Farmers Welfare (DA&FW) is upscaling BPKP in a Mission mode through the National Mission on Natural Farming building upon the strength of the NF concept, and the success achieved in spreading NF through efforts of Centre and State Agricultural Universities (SAUs), practicing NF farmers, institutions/ organizations carrying out NF extension and farmer communities.

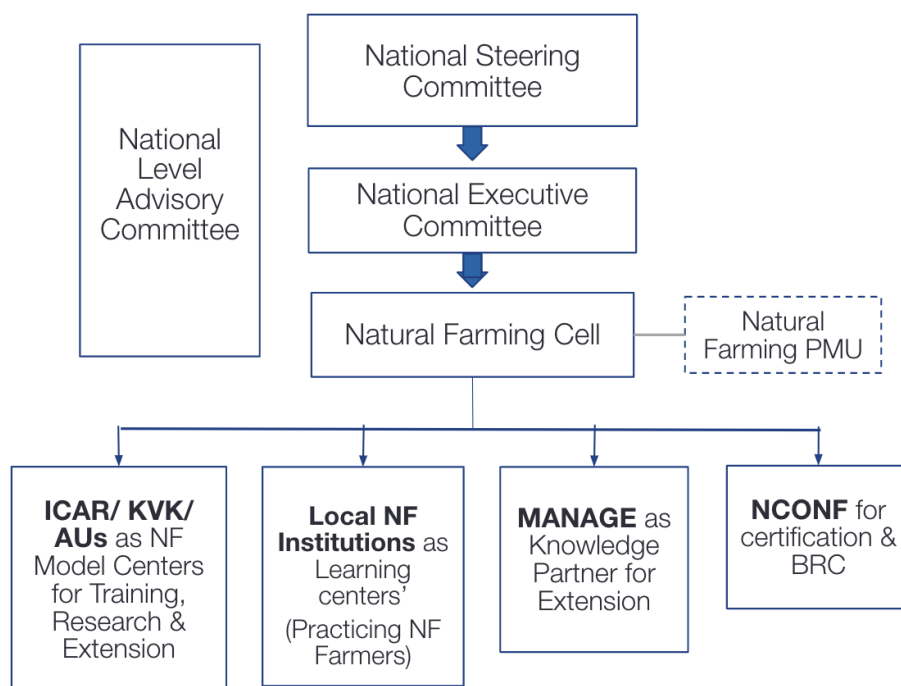
4. National Mission on Natural Farming (NMNF)

- 4.1 NMNF is a standalone Centrally Sponsored Scheme under Department of Agriculture & Farmers Welfare (DA&FW), Ministry of Agriculture & Farmers Welfare (MoA&FW) with an outlay of ₹2481.00 crore, (Government of India share is ₹1584.00 crore and States share is ₹897.00 crore). The Mission is a shift to strengthen agriculture practices with scientifically backed approaches towards sustainability, climate resilience and safe food.

4.2 Mission Objectives

- i. To promote nature based sustainable systems of farming, enhancing usage of on-farm made natural farming bio-inputs to reduce dependency on externally purchased inputs and input cost reduction. To also improve soil health and have sustainable agriculture practices.
 - ii. To popularize livestock (preferably local breed of cow) integrated agriculture-animal husbandry models.
 - iii. To strengthen on-farm agroecological research and knowledge based extension capacities of ICAR institutions, KVKs, Agricultural Universities, etc.
 - iv. To build upon the on-field experience of practicing NF farmers and scientific expertise to thereby evolve & improvise location specific NF package of practices for increased spread of NF.
 - v. To establish scientifically supported common standards and easy farmer friendly certification procedures for naturally grown chemical-free produce.
 - vi. To create and promote a single national brand for naturally grown chemical-free produce.
- 4.3** Till the 15th finance commission, awareness generation, orientation and capacity building of Missions at the State/ District/ Block/ Gram Panchayat (GP)/ Villages, scientists from ICAR / KVK / AUs, NF experts, implementing agencies, farmers, community based organizations and Gram Panchayats shall be taken up. NMNF will be implemented in 15,000 clusters in willing Gram Panchayats to outreach the message of NF to 1 crore farmers and initiate NF in 7.5 Lakh Ha area. These clusters will be the seeding areas where the willing farmers would be trained on NF package of practices and generate on-ground experiences. Baseline and periodic real time data shall be maintained through IT Portal to track progress, monitor, assess impact of NMNF and identify policy support requirements.

5. Administrative Structure at National Level :



5.1 National Steering Committee (NSC) at DA&FW - At the National level, the Mission will be steered by a National Steering Committee (NSC) under the Chairpersonship of Hon'ble Minister of Agriculture & Farmers' Welfare.

5.1.1 Composition of the NSC :

i.	Minister of Agriculture & Farmers' Welfare	Chairperson
ii	Secretary, Ministry of Animal Husbandry & Dairying	Member
iii	Secretary, Department of Fisheries	Member
iv	Secretary, Department of Rural Development	Member
v	Secretary, Department of Water Resources, River Development and Ganga Rejuvenation	Member
vi	Secretary, Ministry of Food Processing Industries	Member
vii	Secretary, Ministry of Tribal Affairs	Member
viii	Secretary, Ministry of Women and Child Development	Member
ix	Secretary, DARE & DG, ICAR	Member
x	Secretary, Ministry of AYUSH	Member
xi	Secretary, D/o Agriculture & Farmers' Welfare	Member
xii	Concerned Representative of NITI Aayog	Member
xiii	Agriculture Ministers of four States (on rotation basis for 2 years)	Member

xiv	Chairperson, FSSAI	Member
xv	Chairman, APEDA	Member
xvi	Practicing NF Farmers (2 numbers nominated by Hon'ble Minister of Agriculture & Farmers' Welfare)	Member
xvii	Additional Secretary (INM)/ Joint Secretary (INM), DA&FW	Member Secretary

5.1.2 The NSC may co-opt technical/ field experts from the Central/ State Institutions, Agencies and Research Organizations working in the field of Natural Farming. The NSC shall meet at least twice a year.

5.1.3 Roles and responsibilities - NSC will be the policy making body providing overall direction and guidance to the Mission and monitor & review its progress & performance. NSC will be empowered to approve any modification, revision or amendment in the operational guidelines and implementation strategy, during the course of Mission implementation. The NSC will meet once a year, minimum.

5.2 National Executive Committee (NEC) - The NSC will be assisted by a National Executive Committee (NEC), constituted at the level of the DA&FW

5.2.1 Composition of NEC

i.	Secretary, DA&FW	Chairperson
ii.	DDG (NRM), ICAR	Member
iii	DDG (Extension), ICAR	Member
iv	DDG (Education), ICAR	Member
v	Additional Chief Secretary/ Principal Secretary (Agriculture) (from 4 States on rotation basis)	Member
vi	Joint Secretary, Department of Animal Husbandry & Dairying	Member
vii	Joint Secretary (NRLM), Department of Rural Development	Member
viii	Joint Secretary, Ministry of Cooperation	Member
ix	Chairman, APEDA	Member
x	Director, ICAR-IIFSR, Modipuram	Member
xi	Practicing NF Farmers (2 numbers nominated by Secretary, DA&FW)	Member
xii	Joint Secretary (INM)	Member Secretary

5.2.2 Roles and responsibilities - The NEC will be responsible for overall implementation and performance of Mission activities. NEC shall sanction the proposals from Natural Farming Cell, DA&FW, undertake monitoring, performance assessment and recommend any modification, revision or amendment to the Mission guidelines and implementation strategy (if needed) to the NSC for approval and implementation. The NEC will meet twice a year, minimum.

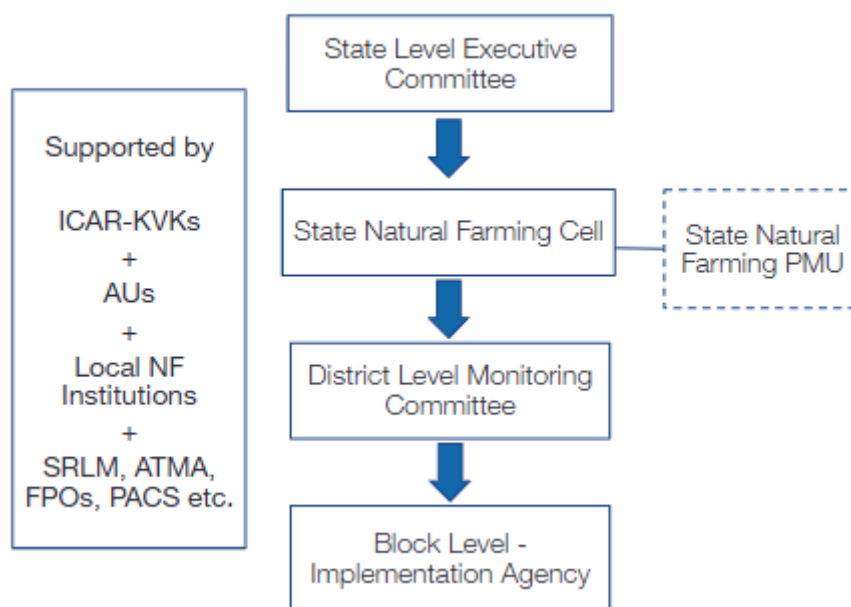
5.3 Natural Farming Cell, INM Division, DA&FW - At the National level, the Natural Farming Cell, DA&FW, headed by Joint Secretary (Integrated Nutrient Management Division) would be responsible for the overall implementation of NMNF across the country. The NF Cell will develop overall policy, operational guidelines for the Mission, handhold the States, Central Institutions & other stakeholders in implementation and also carry out various activities such as capacity building, publicity, monitoring, impact evaluation, etc. The NF Cell will coordinate with the ICAR, MANAGE, NCONF, States, National/ International Organisations, Experts on NF, etc. for proposals, Annual Action Plans and implementation. Further, the NF Cell will be assisted by a Project Monitoring Unit (PMU). Services of NF Experts can also be taken for specific activities.

5.4 National Advisory Committee – To advise on technical aspects and rollout of NMNF, an Advisory Committee is proposed to be constituted at DA&FW with following members :

i.	Additional Secretary (INM), DA&FW	Chairperson
ii.	Joint Secretary (INM), DA&FW	Member
iii.	Joint Secretary (NRLM), Department of Rural Development	Member
iv.	Joint Secretary, Ministry of Cooperation	Member
v.	DDG (NRM), ICAR	Member
vi.	DDG (Extension), ICAR	Member
vii.	DDG (Education), ICAR	Member
viii.	Director General, MANAGE	Member
ix.	Chairman, APEDA	Member
x.	Senior Advisor (Agriculture), NITI Aayog	Member
xi.	Principal Coordinator, AINPOF, ICAR-IIFSR	Member
xii.	Representative from States (2)	Member
xiii.	Representative from Agricultural Universities (2)	Member

xiv.	Practicing NF farmer (2 number nominated by Additional Secretary(INM), DA&FW)	Member
xv.	Director/ Deputy Secretary (NF)	Member Secretary
xvi.	Technical Experts (as required)	Co-opted Members

6. Administrative Structure at State Level :



6.1 State Level Executive Committee (SLEC) shall be headed by the Chief Secretary of the concerned State and consist of Additional Chief Secretary/ Agriculture Production Commissioner/ Principal Secretary/ Secretary (Agriculture), representatives from ICAR, SAUs and allied Departments like Horticulture, Animal Husbandry, SRLM, Agriculture Marketing, Rural Development etc. and practicing NF farmers as members. The SLEC may decide to have a dedicated Government owned agency/ corporation as an implementation arrangement in the state. The committee shall be responsible for the effective implementation of the Mission. In consultation with the State Nodal Department, the SLEC shall prepare the implementation strategy and approve the Annual Action Plan prepared by the State Natural Farming Cell. The State is advised to position nodal officers who are committed and passionate about implementing NF in the State Natural Farming Cell, and District/ Block mission implementation levels.

6.2 State Natural Farming Cell - States shall create a dedicated State Natural Farming Cell at the State headquarter of the State Nodal department headed by the Additional Chief Secretary/ Agriculture Production Commissioner/ Principal Secretary/ Secretary (Agriculture) of the State. The State NF Cell shall consist of the

Director (Agriculture/ ATMA), Joint Directors of Agriculture (ATMA, Training, Marketing, IT, etc.), Deputy/ Assistant Directors of Agriculture, Agriculture Officers and other supporting staff.

6.2.1 Functions of the State NF Cell :

- I. Prepare State Level Annual Action Plan by compiling District-wise Action Plan and submit to the State Level Executive Committee (SLEC) for approval and thereafter forward the same to NEC .
- II. Receive funds from DA&FW for implementation, release as per approved Annual Action Plan and oversee its implementation, regular monitoring & review of programmes.
- III. Organize workshops, seminars, capacity building and training programme for all interest groups/stakeholders at State/District level.
- IV. Conduct independent performance and impact evaluation to assess the performance of schemes in their States.
- V. The State Government and other designated implementing agencies, will ensure active participation of the Panchayati Raj Institutions (PRIs), State Rural Livelihood Missions (SRLM), Farmer Producer Organisations (FPOs), Primary Agricultural Cooperative Society (PACS) etc in the implementation of this scheme
- VI. State Government may involve PRIs, SRLM, FPOs, PACS etc in publicity, outreach of demonstrations and training of farmers and in ensuring participation of farmers from nearby areas for widespread dissemination of technology.
- VII. Any other task as directed by SLEC/ Nodal Department.

6.2.2 The State NF cell may be supported by the State Project Monitoring Unit consisting of Consultants/ Technical Assistants, etc. having technical and administrative expertise on Natural Farming for providing technical guidance and effective monitoring of the scheme implementation. States can decide the number of officials based on their requirements from within the allocated budget.

6.3 District Level Monitoring Committee - The District level implementation will be supervised by a committee under the chairpersonship of District Collector/ Deputy Commissioner and composed of Joint Director (Agriculture)/ District Agriculture Officer, Project Director (ATMA), Head of Krishi Vigyan Kendra, practicing NF farmers and representatives from other allied Departments like

Horticulture, Animal Husbandry, Watershed, SRLM, Cooperatives, Agricultural Produce Market Committee, Local NF Institutions, Agriculture University, etc. as members. Implementation of the Mission will be supported and monitored by the designated Nodal Department.

- 6.4 Block Level Monitoring Committee** - The Block level mission implementation will be monitored by a committee under the chairpersonship of Block Development Officer, and composed of Block Technical Manager/ Assistant Technical Manager (ATMA), Assistant Director of Agriculture/ Block Agriculture Officer, SRLM, practicing NF farmers and representatives from other allied Departments as members, etc.
- 6.5** The District Level Monitoring Committee can, wherever required, position ATMA, SRLM, KVKs, or Non-Government Organizations (NGO) as **Block Implementing Agency (BIA)** under the supervision of the Block Level Monitoring Committee. The indicative criteria for selecting an NGO as BIA is given in Annexure I. The BIA shall coordinate with the Krishi Sakhis/ Community Resource Persons (CRPs), Gram Panchayats, FPO, PACS, ATMA, State designated Officer for Gram Panchayat and training institutions (KVK/ AU/ LNFI) under the overall supervision of Block Level Monitoring Committee for the implementation of the Mission activities at Block Level.
- 6.6** The structure presented above is indicative. As decided by the SLEC, States can create and define suitable administrative structure based on local strengths & strategies strictly within the financial framework that is provided in the activity wise cost components of this Mission guideline.
- 7. Mission Implementation Strategy** - The Mission will create a favorable support ecosystem for farmers in a contiguous landscape for progressive transition to Natural Farming. This will include decentralized farmer-to-farmer extension system supported by; localized and context specific agri-infrastructure such as Bio-Input Resource Centers (BRCs), community managed traditional varieties seed systems, small scale farm implements, etc; and market systems such as local farmers' markets; value addition in food processing, etc.
- 8. Training Ecosystem** - Natural Farming is a knowledge and local agro-ecology based farming practice which requires behavioral changes in farmers and community members. The mission will hence adopt an extension strategy that is focused on on-farm

knowledge that is scientifically derived from NF practice on farmers' fields, and is supported with continuous hand holding of farmers.

- 8.1** The Scientists, Farmer Master Trainers (FMT), nodal person from Local Natural Farming Institutions (LNFI) and State Government Officials will undergo orientation and training on NF at **Centers' of Natural Farming (CoNF)**. AUs, national level NF Institutions etc. that are promoting NF, have experience, credibility and expertise in conducting NF training programmes and have ongoing research initiatives will be identified as CoNF by DA&FW in consultation with States. A CoNF should have NF model demonstration farms at farmers' fields for training activities and exposure visits. The mission in the State will start with training conducted in the CoNFs. CoNF centers will conduct 2 rounds of training for Scientists from ICAR/ KVK/ AU, Central / State Government officials, and to all FMTs.

i. 2 Scientist and 1 FMT from each of the 425 KVKs (total = 1275 trained personals),

ii. 3 Scientists and 1 FMT from each of the 40 AUs (total = 160 trained personals),

iii. 40 State Government officials from each state (from 4 Officials from State HQ (Agriculture + SRLM + Horticulture + AH&D etc), 1 from District (Nodal for NF), 2 from ATMA of each district, 1 from SRLM of each district - 1200 officials)

iv. 1 FMT and 1 nodal person from each Local Natural Farming Institutions (total = 400 trained personals).

The indicative process guidelines along with a suggested list of CoNF is attached in Annexure II.

- 8.2** The Krishi Vigyan Kendra (KVK), Central and State Agricultural Universities (AU), Local Natural Farming Institutions (LNFI) and Farmer Master Trainers (FMT) shall provide on-field training in NF model demonstration farms of farmer fields covering locally relevant NF practices, package of NF practices and preparation of NF inputs such as Beejamrut, Jeevamrut, Neemastra etc and other location specific good NF practices. A total of 665 training institutions - 425 KVKs, 40 AUs (SAUs/ CAUs/ ICAR and other Institutions) and 200 LNFI; will develop multiple NF model demonstration farms on farmers fields to train, conduct exposure visits, develop NF Package of Practices (PoPs), documentation, extension and research duly capturing the farmers' knowledge. The detailed indicative guidelines for Farm Workers is given in Annexure III.

- 8.3** Approximately 2060 NF model demonstration farms will be established for hands-on training on natural farming. The NF model demonstration farms will be established by each of the 665 training institutes -

- i. Three at farmers fields and One at on-station developed by each of the 425 Krishi Vigyan Kendra (KVKs) and 40 Agricultural Universities (AUs).
- ii. One NF model demonstration farm will be established by each of the 200 LNFI.

Further, FMT, Krishi Sakhis (Community Resource Persons - CRP) will also have their farms as NF model demonstration farms.

8.4 Local Natural Farming Institutions (LNFI) are fully functional NF farms existing for more than 3 years in at least 2 acres of land, which are already used as training sites. LNFI will be identified by State/UTs and onboarded on the NMNF IT portal. Further these LNFIs must have necessary basic training facilities as mentioned in Annexure IV and a minimum of 10 practicing NF farmers trained/associated with them, preferably from the same or neighbouring District to impart training on NF. The LNFI and its associated practicing NF farmers will work closely with the Block and District Level Monitoring Committee. The need based establishment support for LNFI shall be assessed and enabled by the District Level Monitoring Committee. The detailed indicative guidelines for the LNFI are given in Annexure IV.

8.5 The on-field training and extension system will be supported by **Farmer Master Trainers (FMT)** - farmers who are practicing NF for a minimum of 3 years and their farms would also serve as NF model demonstration farms. Each of the training institutions (KVK/ AU/ LNFI) will have 1 FMT to develop the NF model demonstration farms, train Krishi Sakhis (CRPs) and willing farmers on NF along with the Scientists/ NF Experts and provide continuous handholding support to Krishi Sakhi (CRPs) and Block Level Mission Implementation team. The FMTs will regularly visit the clusters to ensure that all the NF package of practices and preparation of on farm inputs like Beejamrut, Jeevamrut, etc. are followed by the willing farmers. The selection of FMTs shall be done by the respective training institution in consultation with the District Level Monitoring Committee. The Indicative detailed Guidelines for FMT are given in Annexure V.

8.6 The farmer to farmer led extension system will be anchored by the local Community Based Organisations (CBO) like SHGs, FPOs, PACS, etc.

9. Research Ecosystem for Natural Farming - ICAR, KVKs, AUs and other Institutions engaged with research on NF shall carry out research and documentation on NF on fields of practicing NF farmers', FMT, NF model demonstration farms and other sites of

Mission implementation; thereby evolving location & landscape specific package of practices for NF and contribute to the overall research capacity in agroecology based NF. For this purpose, the Mission will provide Competitive Research grants.

10. Dedicated Natural Farming Curriculum at Agricultural Universities - Dedicated certificate, diploma, undergraduate and postgraduate courses on NF have been/ shall be developed. NF shall be included in the Rural Agricultural Work Experience (RAWE) programme. Additionally, on field internship opportunities on NF for graduate / postgraduate students / youths from agriculture and allied backgrounds shall be initiated.

11. Nodal Division for the training programs including visits conducted by KVK will be the ICAR - Agricultural Extension Division. Nodal Division for the RAWE program, UG/PG dedicated course on NF, student internships, training programs (including field visits etc) which will be conducted by AU will be the ICAR Agricultural Education Division. ICAR - Natural Resource Management (NRM) Division shall be the Nodal Division to develop the protocols, guidelines and coordinate the development of NF model demonstration farms across KVKs/ AU/ LNFI/ farmers fields, documentation of NF package of practices and competitive research grants. All the Nodal Division of ICAR shall coordinate with institutions and develop & submit Annual Action Plan (AAP). Nodal Divisions will monitor the progress of the plan, conduct progress evaluation, impact assessment and submit quarterly progress report to DA&FW. The funds will be released as per the extant guidelines and approved AAP, submission of Utilisation Certification (UC) etc.

12. Implementation at NF Clusters

12.1 Priority Areas - The Mission will be implemented in the priority districts as given below :

- i. Namami Gange regions of 5 km corridor along river Ganga
- ii. Districts on the banks of major rivers as decided by the State
- iii. Districts with high fertiliser input sale in States
- iv. Districts with Low fertiliser input sale in States
- v. Districts with tribal areas - Blocks from the Tribal Sub plan
- vi. Districts with strong SRLM / PACS / FPOs and other Community Based Organisations (CBOs)

Preference will be given to areas having the presence of practicing NF farmers.

12.2 The Mission will work in selected 15,000 Clusters across the identified districts from the priority areas reaching 7.5 Lakh Ha area. The District will identify Gram Panchayats (GP) in suitable Blocks for taking up NMNF. In each selected GP, cluster(s) of contiguous areas cumulative to 50 Ha and approximately 125 farmers will be developed as NF clusters based on their willingness to implement NF within the identified GP. The cluster size may be reviewed and appropriately set for the Himalayan/ hilly States and areas with difficult terrain by the respective SLEC. Each farmer is encouraged to start in small landholding, and is eligible for support under NMNF to a maximum of one acre to enable learning. In case cumulative contiguous area of 50 Ha. could not be found in 1 GP, the cluster can be formed in adjoining GPs (not more than 2-3 GPs).

12.3 To encourage the spirit of competition, the States are encouraged to take up programs to mobilise interest of the Gram Panchayat (GP) to adopt Natural Farming, such GPs which come forward to promote NF may have natural preference in selection. The District Level Monitoring Committee shall identify and onboard Gram Panchayats that are willing to take up NF from within the NMNF priority regions. Such GPs may also be encouraged to converge their own funds or mobilise other resources for the promotion of NF in a landscape approach.

12.4 30,000 Krishi Sakhis (Community Resource Persons - CRP) - For easy scaling up of NF practices and knowledge, the farmer to farmer extension is to be anchored in Community Based Organisations (CBOs) like women SHGs/ FPOs/ PACS etc. Two CRPs per cluster will be deployed to generate community wide awareness and mobilise farmers to practice NF. Krishi Sakhis or practicing NF farmers must be the CRPs, the indicative process guideline for Krishi Sakhi (CRP) is given in Annexure VI.

i. The Krishi Sakhis (CRP) will undergo on-field hands-on training by FMTs and Scientists/ Experts associated with KVK/ AU/ LNFI.

ii. A team of 2 Krishi Sakhis (CRP) will mobilise approximately 125 willing farmers and form a cluster (cumulative area of 50 Ha).

iii. The Krishi Sakhis (CRP) with support from Block level mission, ATMA and FMT etc will organise meetings with members of SHGs, Anganwadi, Gram Sabha etc orienting them about the benefits of NF, about the Mission and on preparation of bio-inputs like Jeevamrut, Beejamrut, etc.

iv. The Krishi Sakhis (CRPs) will mobilise and enroll the willing farmers to practice NF at the beginning of each crop season.

v. With help of the FMT, the Krishi Sakhi (CRP) will orient the enrolled farmers on the NF practices that are to be followed during the season and ensure their implementation in the field.

12.5 Willing Farmers in a NF clusters - The 125 willing farmers get initiated into NF and progressively expand the number of NF practices and the area allocated for NF within their land holding. Farmers may start practicing NF in a smaller area and gradually expand to their entire land holding as they gain experience and confidence on NF. The 125 willing farmers will then each create awareness and train 6 more farmers to initiate NF practices, expanding the outreach of NF to additional ~750 farmers per cluster.

12.6 The 18.75 Lakh trained farmers will create awareness and train 6 more farmers each in the NF model demonstration farms of trained farmers and farms attached to KVK/ AU/ LNFI etc thereby encouraging 1 crore farmers to initiate NF. The trained farmers will be provided with output based incentive to practice NF package of practices & NF good practices like PMDS, application of Beejamrut, Jeevamrut, etc., diversified cropping system, etc.; train 6 more farmers, upkeep of their livestock, prepare NF inputs or purchase NF inputs from BRC, and purchase drums, mixing & storage containers, etc. The detailed indicative guidelines for the trained willing farmers are given in Annexure VII.

12.7 State Mission Unit, District and Block Level Monitoring Committees will conduct regular monitoring of farm level indicators, farmer progressions and extension of NF across the clusters. States may also carry out social audits to ensure communities involvement/ ownership and accountability.

13. A simple participatory certification system shall be initiated for the farmers transitioning to NF as part of the Mission, similar to the Participatory Guarantee System. NCONF shall develop the certification procedures.

14. Common Branding - Common National Brand shall be developed for naturally grown chemical-free produce. The detailed Operational Guidelines will be developed and shared.

15. National Institute of Agricultural Extension Management (MANAGE)

15.1 MANAGE is proposed to be developed as the knowledge partner on NF capacity building and extension. The following will be the roles of MANAGE :

- I. For other than those trained at CoNF and 665 training institutions, MANAGE to conduct training and capacity building of scientists from AUs/ KVKs/ ICAR institutions and Officials from Ministries and Department of Centre/ State/ District/ Block levels, Master trainers, Krishi Sakhis, FPOs, PACS, Gram Pradhans, SHGs, etc.
- II. Conduct refresher training programs for Scientists from KVKs and AUs, nodal persons from LNFI, FMTs, Krishi Sakhi (CRPs) etc. to reinforce their expertise in NF techniques, research findings, extension practices etc.
- III. Creation of training modules, study materials, course content, IEC materials and learning tools for Scientists, FMTs, Krishi Sakhi (CRPs), Central/ State/ District/ Block Level Officials, etc. To be prepared in partnership with practicing NF farmers, CoNF, KVKs, AUs, LNFI, NF experts, ICAR institutions and Government & Non-Government Institutions with experience and expertise on NF. Funds routed to States/ SAMETI/ State appointed institutions as decided by SLEC to translate, print and distribute the set of training kit materials (NF posters, NF study material, FAQ, One pager note on NF etc.) Carry out yearly updation and improvement of the same.
- IV. Facilitate and conduct regular workshops/ conferences/ consultations in collaboration with practicing NF farmers, CoNF, KVKs, AUs, LNFI, NF experts, ICAR institutions, State departments, NCONF, and Government & Non-Government Institutions with experience and expertise on NF etc. for cross learning, knowledge exchange and develop extension tools, frameworks and extension materials that will be essential for NF extension such as case studies, success stories, etc.
- V. Coordinate the establishment and strengthening of CoNF, LNFI FMT etc. in collaboration with the State and District Missions. Release funds and coordinate submission of Utilisation Certification (UC) to the institutions for the purposes as given in paragraph 22.
- VI. Assist in the conduction of all training programs at CoNF and LNFI in coordination with District and Block Mission Monitoring Committees. Release funds to the institutions for the purposes as given in paragraph 22.

- VII. Establish and maintain a decentralized knowledge management system for Natural Farming within MANAGE to facilitate cross-learning and knowledge exchange. Facilitate linkages between state departments, ATMA, KVKs, AU, Local NF institutions, FMTs associated with the institutions, practicing NF farmers, district and block level monitoring committees, and other stakeholders.
 - VIII. Conduct periodical impact studies on NF extension management to identify challenges, evaluate outcomes, and recommend improvements to enhance the overall effectiveness and reach of NF extension practices.
- 15.2** MANAGE will submit Annual Action Plan (AAP) for its mandate to DA&FW for approval. MANAGE will monitor the progress of the plan, conduct progress evaluation, impact assessment and submit quarterly progress report to DA&FW. The funds will be released as per the extant guidelines and approved AAP, and submission of Utilisation Certification (UC) etc.
- 16. National Centre for Organic and Natural Farming (NCONF)**
- 16.1** NCONF, a subordinate office of DA&FW shall work towards development and maintenance of an IT portal for NF, develop NF certification procedures & undertake certification and development of knowledge materials & conduct training & extension activities for Bio-Input Resource Centres (BRCs).
- 16.2** NCONF will submit Annual Action Plan (AAP) for its mandate to DA&FW for approval. NCONF will monitor the progress of the plan, conduct progress evaluation, impact assessment and submit quarterly progress report to DA&FW. The funds will be released as per the extant guidelines and approved AAP, and submission of Utilisation Certification (UC) etc.
- 17. National Rural Livelihood Missions (NRLM)/ SRLM / FPO / PACS**
- 17.1** The Mission proposes to work closely with NRLM/ SRLM in a convergence mode to evolve a strategy for spreading NF across all the prioritised Clusters with Cluster Level Federations (Krishi Sakhi, Pashu Sakhis, SHGs, Village Organisations, etc.) of NRLM in the country. In the clusters where NRLM/ SRLM agencies are appointed as the Block Implementing Agencies, capacities will be built of NRLM / SRLM to work as Implementing Agencies on ground for the Mission implementation as per the strategy decided by the State Level Executive Committee. Members of the SHGs can be

Community Resource Persons (CRPs) for the clusters under the Mission. NRLM shall support the units at grassroot level for implementation activities like outreach, awareness generation, mobilization, training, certification, etc. Also, SHGs will be one of the ideal choices for setting up and/or operation of Bio-input Resource Centres.

18. Convergence with NF initiatives of other Ministries, Government, Philanthropy, CSR, International Institutions, etc.

18.1 Convergence will also be explored with the various programmes/projects/ schemes of Central & State Governments viz. schemes of DA&FW, APEDA, Rural Development, Ministry of Food Processing Industries, Ministry of Panchayati Raj, Ministry of Ayush, Cooperation, Department of Animal Husbandry & Dairying (DAH&D), Ministry of Tribal Affairs, etc.; Non-Government Organizations, Philanthropy, CSR, International Institutions, etc. associated with NF on thematics ranging from value addition in food processing, safe & nutritious food, water quality, etc. For example, linkages with *Goshalas* will be explored for ensuring the availability of inputs, enhancing local livestock (preferably local breed of cow) population through breed improvement, development of NF model demonstration farms at Central Cattle Breeding Farms/ Regional Fodder Stations, etc. through convergence with DAH&D, provide market linkages at district/ block/ GP levels through convergence for local farmers' markets, APMC (Agricultural Produce Market Committee) Mandis, Haats, Depots, etc.

19. Bhartiya Prakritik Kheti Bio-input Resource Centres (BRCs)

19.1 For the successful adoption of NF, access to livestock and plants for preparing animal and plant based NF inputs are key. Therefore, it is proposed to establish 10,000 need-based BRCs for production and supply of NF inputs at local levels in an enterprise model and support farmers willing to adopt NF and those who are not in a position to prepare these by themselves.

19.2 These BRCs can be operated by practicing NF farmers, FPOs, SHG, PACS/ Cooperatives, local rural entrepreneurs, KVKs, etc. with *Goshalas* at Gram Panchayat or any other agency identified by the State.

19.3 Detailed Operational Guidelines for establishment, operational modalities and protocols will be developed and shared.

20. Procedure & Timelines for Submission & Approval of Annual Action Plan and Fund Flow Mechanism

20.1 Tentative Implementation Timeline

S. No	Tentative Timeline	Activity	Responsibility	Remarks/ Assumptions
1	By 30.12.2024	Identification of Scientists & FMTs from KVKs & AUs, State Officials, etc. for training at CoNF	ICAR + States/UTs	
2		Submission of AAP by States/ UTs	States/ UTs	
3	15.01.2025	1st Round of 4 days Training to Scientists & FMTs from KVKs, AUs and LNFIs, State Officials at CoNF	CoNF	- 1 round of residential training of 4 days duration for Scientist & FMTs from KVKs/ AUs/ LNFIs and State Officials - Batches of 70 - 80 participants at each training at CoNF
4	10.01.2025 to 31.01.2025	Awareness Generation at GPs by trained Scientists, FMTs, Krishi Sakhis and MANAGE	Scientists from AUs/ KVKs, FMTs, Krishi Sakhi, MANAGE	
5	10.02.2025	Identification of GP for mission	State/ District	
6		Onboarding of Local NF Institutions through States/ UTs	States/ UTs + MANAGE	
7		Linking of KVKs/ AUs/ LNFIs to the respective GPs	States/ UTs	- Each Training institute shall be linked to ~23 GPs
8		Identification of Krishi Sakhis (CRP) at GPs	District level monitoring committee	
9	15.02.2025	First Round of 5 days Training to Krishi Sakhis/ CRPs at KVK/ AU/ LNFI	KVK/ AU/ LNFI and MANAGE	- 5 day training per batch - Batches of 30

				participants at each training - 10 training days per center for 2 batches
10	25.02.2025	Onboarding of BRC entrepreneurs	NCONF	
11	25.02.2025 to 10.03.2025	Mobilisation activities for enrolment of Willing Farmers at GPs	Krishi Sakhi (CRP)	Continuous activity in the clusters
12		Onboarding of Willing Farmers at GPs through IT Portal	Krishi Sakhi (CRP)	
13	01.03.2025 to 15.07.2025	Farmer training at KVK/ AU/ LNFI (batch of 50 participants)	KVK/ AU/ LNFI and MANAGE	- 1 day duration each - Batches of 50 participants at each training - Total 56 batches per training institution - 15 training days per month
14	16.08.2025 to 30.09.2025	Field visit of Scientists & FMTs to clusters	Scientists & FMTs of KVK/ AU/ LNFI	- 1 visit per cluster (Kharif) - 15 days per month - 25 clusters are linked with each KVK/AU/LNFI
15	15.02.2026 to 25.02.2026	Second round of Training of Scientists & FMTs from KVKs/ AUs/ LNFIs at CoNF	CoNF / MANAGE	- 4 day training - Batches of 500 participants at each training at CoNF
16	25.02.2026 to 10.03.2026	Second Round of Training of Krishi Sakhis/ CRPs at KVK/ AU/ LNFI	KVK/ AU/ LNFI and MANAGE	- 5 day training - Batches of 50 participants at each training

20.2 The tentative allocation for the States for the next financial year will be intimated by NF Cell, INM Division, DA&FW by February every year.

I. The State Government will prepare a prospective implementation

plan for the duration of the Mission with details of potential regions for the clusters, and timelines for implementation. Encouraging the spirit of competition, willingness from Gram Panchayats will be done to identify Gram Panchayats for the mission. Subsequently a consolidated action plan on a project basis with details such as area to be taken up in each cluster; NF cropping systems to be adopted, number of beneficiaries to be on-boarded, implementation schedule with a time bound road map along with annual targets and funds requirements shall be prepared.

- II. The Annual Action Plan (AAP) duly approved by SLEC along with the minutes of SLEC, shall reach DA&FW for examination, deliberation and final approval by first week of April every year. Post facto approvals from SLEC can also be considered.
- III. NF Cell at DA&FW will examine, sanction AAP, release funds and accordingly intimated to States.
- IV. For receiving funds under NMNF, it is mandatory for States to open SNA and Child Agencies Account and map the same in PFMS
- V. States/ Implementing agencies will furnish utilization certificate (UC) in the prescribed format (Form GFR 12-C) and physical & financial progress report containing physical and financial targets of the previous grants-in-aid, along with State share, before requesting for release of subsequent installments.
- VI. All Implementing Agencies (IAs) are required to maintain subsidiary accounts of the grants-in-aid and get the same audited from a Chartered Accountant.
- VII. Output based incentives to farmers will be released as per provisions for release of funds contained in GFR 2017 and instructions issued in this regard by Government of India from time to time.

21. Online Digital Monitoring Mechanism

- 21.1** The Mission will have a strong online based monitoring and evaluation mechanism. NMNF will have a robust online digital portal with a geospatial data system for tracking the progress of the Mission's activities - onboarding, maintaining baseline and periodic data. The portal will capture and track the field data in the clusters - of farmers, farms, soil health, etc. and NF practices, providing an

assessment of the progressive spread of NF. Baseline data will be captured and the progress tracked on a Web-GIS-Mobile integrated system. Dashboards and reports will be generated for conducting impact assessment across all levels.

21.2 The digital Portal will provide a dynamic updated repository of institutions, resource farmers, trainers, organizations involved in NF across the country including their geotagged information. In addition to the program database, the Portal will also compile NF related databases of various institutions/organizations/groups working on NF independent of the Mission; thus, providing an integrated database of NF for the country.

21.3 The digital Portal will also be the knowledge repository serving various stakeholders, sharing local innovations in NF practices, providing curated knowledge products such as packages of practices, training modules, communication materials and such others useful for the practitioners.

21.4 Submission of Reports and uploading of information on NF Portal - The dedicated portal of NMNF will function as a central knowledge management-cum-reporting and progress review platform. All Central and State level implementing agencies will be required to upload quarterly progress in the respective module. Acceptance of the Utilization Certificates and subsequent release of installments will be linked with the progress uploaded on this portal.

22. Cost Components - Overall Mission Components and Cost Norms (limited to 15th Finance Commission Period)

S No.	Program Initiatives	Description	Centre (₹ Lakhs)	State (₹Lakhs)	Total (₹ Lakhs)
1	Support to MANAGE*		4,000.00	0.00	4,000.00
2	Support to NCONF		1,458.50	0.00	1,458.50
3	Support to AUs/ ICAR Institutions/ KVKs/ Local NF Institutions** for development of NF Model Demonstration Farms		3,685.52	0.00	3,685.52
4	Training support through CoNF**, KVK, AU, LNFI		10,450.7	0.00	10,450.7
5	Implementation Support to 15,000 NF clusters of minimum 50 Ha each	- Total output based on incentive of ₹1500 Crore for 7.5 Lakh Ha - ₹4,000 per acre per year for 2 years	125,892.00	83,928.00	209,820.00

S No.	Program Initiatives	Description	Centre (₹ Lakhs)	State (₹Lakhs)	Total (₹ Lakhs)
		- ₹598.2 Crore as support for implementation - ₹7976 per Ha			
6	Support for Bio-Input Resource Centre (need based)	₹100,000/- per BRC, with total 10,000 BRC	6,000.00	4,000.00	10,000.00
7	PMU support at State/ District level/ other mission management expenditures	2% of GoI share in entire Centre-State component	2,637.84	1,758.56	4,396.40
8	National/ Regional/ State level Publicity, awareness generation, National/ Regional Seminars, exhibitions, trade fair, etc., additional need based workshops, training programs, pilot projects/ convergence initiatives on NF with allied Ministries/ Departments/ States and other components which are not covered in the scheme by the Mission Headquarter		2,776.84	0.00	2,776.84
9	Mission Management cost at National level, including hiring of professional Project Monitoring Unit, IEC components, innovative component or impact/ research studies, etc.		1,500.00	0.00	1,500.000
	GRAND TOTAL		158,401.40	89,686.56	248,087.96
			or 158,400.00	or 89,700.00	or 248,100.00
*Activities exclusively being undertaken by MANAGE					
**Funds for activities and programs by CoNF and Local NF Institutions shall be routed through MANAGE					

22.1 MANAGE as knowledge partner (100% Central Share)

S. No.	Parameter/ Component	Amount (₹ lakh)
A	MANAGE as knowledge partner on NF capacity building and extension (Manpower, Infrastructure and Travel)	800.00
B	Training and Capacity building programs (i+ii)	1395.00
i	Officials from Ministries and Department of Centre/ State/ District/ Block levels, Master trainers, etc. Total 225 trainings each of 4 days duration @ ₹3000/- per participant per day for 25 participants	675.00

ii	Scientists from KVK/ AU, Nodal persons from LNFI, FMTs, Krishi Sakhi (CRPs), FPOs, Gram Pradhans, SHGs, etc. Total 300 trainings each of 4 days training duration @ ₹2000/- per participant per day for 30 participants	720.00
C	Creation of training modules, study materials, course content, IEC materials and learning tools. Funds routed to States/ SAMETI/ State appointed institutions as decided by SLEC to translate, print and distribute the set of training kit materials (NF posters, NF study material, FAQ, One Page Note on NF, etc.) <ul style="list-style-type: none"> - Training kit @ ₹1000/- for 1835 Scientists and FMTs, 1200 Central/ State/ District/ Block Level Officials and 30,000 Krishi Sakhis (CRPs) - 6 sets of posters for each cluster @ ₹300/- per poster set for 15,000 clusters 	600.35
D	Workshops/ conferences to develop extension tools, frameworks and knowledge materials that will be essential for NF extension 18 Programs @ ₹15 Lakh each for 50-100 participants	270.00
E	Regional/ National Consultations for cross learning and knowledge exchange. 10 Programs @ ₹45 Lakh each for 300 participants	450.00
F	Conduct periodic impact studies, documentation of knowledge and extension materials such as success stories, case studies, videos, etc.	400.00
G	Total (A + B + C + D + E + F)	3,915.35
H	Institutional charge (2%)	78.307
	Grand Total (G + H)	3,993.66 or 4,000.00

22.2 National Centre for Organic and Natural Farming (100% Central Share)

S No.	Component Description	Cost Breakup(Rs)	Amount (₹ Lakhs)
(A)	Development of online NF portal and mobile application, its management and maintenance.		150.00
(B)	Development of round the year green cover NF model demonstration farms for demonstration, and training	- 1 NF model demonstration farm at each of the 5 RCONFs - (i + ii) * 5	8.5

i	Farm worker	- 1 Farm worker @ ₹400/- per day* up to maximum of 150 person-days per year as per actuals for 2 years	1.2
ii	Farm inputs, seeds, equipments, materials, etc. as support for development of NF model demonstration farms	₹50,000/- per NF model demonstration farm, as per actuals, for 2 years 1. One time Costs: ₹10,000 - Tools, equipments for Input preparation - ₹5000 - Other Infrastructure - boards, posters, etc. - ₹5000 2. Support per season for 2 years (4 seasons) - ₹10,000 - Raw materials for input preparation - ₹4000 - Biomass mulching material - ₹4000 - Seed and planting materials - ₹2000	0.5
(C)	Training and capacity building for BRC entrepreneurs	- 2 rounds of 3 day duration @ ₹2000/- per head per day for 10,000 participants	1,200.00
(D)	Development of e-learning modules, films, videos, success stories and documentation work including publicity and training on certification, etc. Study cum exposure visits for collection of best practices, success stories and media outreach		50.00
(E)	Organize Seminars/ conferences / consultations/ workshops		50.00
	Grand Total (A + B + C + D + E)		1,458.50
* Limited to minimum wages rate prescribed by the State for unskilled labor; Eg; ₹340/day in UP, ₹ 320/day in Maharashtra, ₹460/day in Karnataka			

22.3 Development of NF model demonstration farms for knowledge documentation, research and training at AUs/ ICAR Institutes/ KVKs/ Local NF Institutions
(100% Central Share)

S No.	Component Description	Cost Breakup	Amount per AU (₹in Lakhs)
(A)	Development of round the year green cover NF model demonstration farms at AUs. Minimum 1 farm on-station, and 3 farms at farmer fields.		

Cost for one on-station NF model demonstration farms			
i	Farm worker	- 1 Farm worker @ ₹400/- per day* up to maximum of 150 person-days per year as per actuals for 2 years	1.2
ii	Farm inputs, seeds, equipments, materials, etc. as support for development of NF model demonstration farm	₹50,000/- per NF model demonstration farm, as per actuals, for 2 years 1. One time Costs: ₹10,000 - Tools, equipments for Input preparation - ₹5000 - Other Infrastructure - boards, posters, etc. - ₹5000 2. Support per season for 2 years (4 seasons) - ₹10,000 - Raw materials for input preparation - ₹4000 - Biomass Mulching material - ₹4000 - Seed and planting materials - ₹2000	0.5
iii	Total for one NF model demonstration farm (i + ii)		1.7
iv	Development of 3 NF model demonstration farms at farmer field by AU - Farm inputs, seeds, equipments, materials, etc. as need based support for development of NF model demonstration farms	₹50,000/- per NF model demonstration farm, as per actuals, for 2 years 1. One time Costs: ₹10,000 - Tools, equipments for Input preparation - ₹5000 - Other Infrastructure - boards, posters, etc. - ₹5000 2. Support per season for 2 years (4 seasons) - ₹10,000 - Raw materials for input preparation - ₹4000 - Biomass Mulching material - ₹4000 - Seed and planting materials - ₹2000	1.5
v	Output based incentive to Farmer Master Trainer (FMT) for development of 4 NF model demonstration farms and conducting demonstration at clusters/ fields of trained willing farmers.	- 1 FMT for 2 years - 15 days per month as per actuals @ ₹400 per day + ₹200 for TA per month as per actuals	1.49

	Output of the FMT will be monitored real time on IT portal		
vi	Documentation & research of NF practices, and NF model demonstration farms of on-station and farmer field farms	- ₹1 Lakh per year for 2 years (one time cost)	2.00
vii	Total (iii + iv + v + vi)		6.69
viii	Miscellaneous charges (as per actuals)	2% of Total	0.134
ix	Total per AU / ICAR institute		6.822
x	Total for 40 AUs / Institutes (in Lakhs) (ix * 40)		272.87
(B)	Development of round the year green cover NF model demonstration farms for KVKs . Minimum 1 farm on-station, and 3 farms at farmer fields.		
	Cost for one on-station NF model demonstration farm		
i	Farm worker	- 1 Farm worker @ ₹400/- per day* up to maximum of 150 person-days per year as per actuals for 2 years	1.2
ii	Farm inputs, seeds, equipments, materials, etc. as support for development of NF model demonstration farm	@ ₹50,000/- per NF model demonstration farm as per actuals for 2 years 1. One time Costs: ₹10,000 - Tools, equipments for Input preparation - ₹5000 - Other Infrastructure - boards, posters, etc. - ₹5000 2. Support per season for 2 years (4 seasons) - ₹10,000 - Raw materials for input preparation - ₹4000 - Biomass Mulching material - ₹4000 - Seed and planting materials - ₹2000	0.5
iii	Total for one NF model demonstration farm (i + ii)		1.7
iv	Development of 3 NF model demonstration farms at farmer field - Farm inputs, seeds, equipments, materials, etc. as need based support for development of NF model demonstration farm	@ ₹50,000/- per NF model demonstration farm as per actuals for 2 years 1. One time Costs: ₹10,000 - Tools, equipments for Input preparation - ₹5000 - Other Infrastructure - boards,	1.5

		posters, etc. - ₹5000 2. Support per season for 2 years (4 seasons) - ₹10,000 - Raw materials for input preparation - ₹4000 - Biomass Mulching material - ₹4000 - Seed and planting materials - ₹2000	
v	Output based incentive to FMT for development of 4 NF model demonstration farms and conducting demonstration at clusters/ fields of trained willing farmers. Output of the FMT will be monitored real time on IT portal	- 1 FMT for 2 years - 15 days per month as per actuals @ ₹400 per day + ₹200 for TA per month as per actuals	1.49
vi	Total (iii + iv + v)		4.69
vii	Miscellaneous charges (as per actuals)	2% of Total	0.094
viii	Total per KVK (vi + vii)		4.782
ix	Total for 425 KVKs (viii * 425)		2,032.25
(C)	Support for Competitive Open Research grants and field internships on NF	- Maximum ceiling limit for each grant (research + internship): ₹20-50 lakhs; Minimum number of grants: 50, subject to the overall allocation of ₹1240 Lakhs	1,240
(D)	NF Research & Training cell for overall coordination, monitoring & evaluation at ICAR-IIFSR and ATARIs.	- Inclusive of 13 young professionals at ₹45,000/- per month for 2 years (2 for ICAR-IIFSR and 1 for each 11 ATARIs)	140.40
(E)	Establishing LNFI as on field support to NF clusters (Funds routed through MANAGE)	- 200 LNFI, each consisting of 10 Practicing NF Farmers - Need based support @ ₹50,000 per institution, as per actuals 1. One time Costs: ₹10,000 - Tools, equipments for Input preparation - ₹5000 - Other Infrastructure - boards, posters, etc. - ₹5000 2. Support per season for 2 years (4 seasons) - ₹10,000	100.00

		- Raw materials for input preparation - ₹4000 - Biomass Mulching material - ₹4000 - Seed and planting materials - ₹2000	
	GRAND TOTAL (A.x + B.ix + C + D + E)		3,685.52
* Limited to minimum wages rate prescribed by the State for unskilled labor; Eg; ₹340/day in UP, ₹ 320/day in Maharashtra, ₹460/day in Karnataka			

22.4 Training Support through CoNF, KVK, AU and LNFI (100% Central Share)

S No.	Component Description	Cost Breakup	Amount (₹ Lakhs)
(A)	Training at Centers' of Natural Farming (CoNF)		
(i)	- 2 Scientist and 1 FMT from each of the 425 KVKs (total = 1275 trained personals) - 3 Scientists and 1 FMT from each of the 40 AUs (total = 160 trained personals) - 1 FMT and 1 nodal person from each Local Natural Farming Institutions (total = 400 trained personals) (Funds routed through MANAGE)	- Total 8 days long training (2 rounds of 4 days each) - ₹2000/- per day per participant; all inclusive	293.6
(ii)	Training of Government Officials - 4 Officials from State/UT HQ (Agriculture, SRLM, Horticulture, Animal Husbandry, etc.) - 1 from District (Nodal for NF) - 2 from ATMA of each district - 1 from SRLM of each district - 40 Officials from each state - 1200 officers from 30 States/UTs (Funds routed through MANAGE)	- 1 round of 3 days long training - ₹2000/- per day per participant; all inclusive	72.00
	Total training for 1200 Officials, 970 Scientists, 200 LNFI point persons and 665 FMTs at CoNF (i+ii)		365.6

(B)	Output based incentive to FMT of LNFI for training and demonstration	- 1 Practicing NF Farmer* per LNFI = 200 farmers - (₹6000 + ₹200 for TA/DA) per month per farmer - 15 days per month as per actuals @ ₹400 per day + ₹200 for TA per month as per actuals	297.6
(C)	Training of Krishi Sakhis (CRP) Krishi Sakhis (CRP) are mandated to do cluster wide awareness generation, meetings with local groups, mobilization of farmers, demonstrations, field training, progress data collection, continuous hand holding farmers, and other cluster level extension activities. Each Krishi Sakhi (CRP) shall undergo continuous rounds of rigorous hands-on training programs. - Krishi Sakhis (CRP) trained at NF model demonstration farms of FMT/ KVK/ AUs/ LNFI (Funds routed through MANAGE)	30,000 Krishi Sakhis/ (CRP) : - Each Krishi Sakhi (CRP) undergoes 2 training programmes of 5 days duration each (total 10 days duration) - @ ₹1200/- per participant per day, including resource fee of Master Trainer - Resource fee of Master trainer is capped at ₹1000/- per day per Master Trainer - TA shall be as per actuals	3,600.00
(D)	Training programs for farmers - No. of training institutes = 425 KVKs + 40 AUs + 200 LNFI = 665 - No. of farmers to be trained till March 2026 = 18.75 Lakh farmers - Total outreach of farmers under NMNF = 18.75 Lakh x 6 = 1.12 crore farmers		
(i)	18.75 Lakh farmers will have 2 rounds of 1 day each training at 665 KVK/ AU/ LNFI. - 665 (425 KVKs + 40 AUs + 200 LNFI)	- 2 training programs (of 1 day duration) per farmer in batches of 50 farmers each - 125/- per farmer per day	4,687.5
(ii)	Training programs of 18.75 Lakh farmers at NF model demonstration farms of farmer fields for 2 years by FMT at the NF clusters	- 2 programs of 1 day duration per year, in batches of 50 farmers per cluster - ₹20 per farmer per day	1,500.00
	Total training for 18.75 Lakh farmers, 2 rounds in KVK/ AU/ LNFI and 2 rounds in cluster ((i) + (ii))		6,187.5
Total Training Support Through CoNF, KVK, AU and LNFI			10,450.7

(A+B+C+D)	
-----------	--

22.5 Support to NF clusters

Support to States (60:40 or 90:10 Central and State Share)

S. No.	Component	Cost breakup	Amount per cluster for 2 years (₹ Lakhs)	Total Amount for 15,000 clusters (₹ Lakhs)
A	Output based incentive to Krishi Sakhis (CRP) for hand-holding, training, extension, and documentation for 2 years. Output of the Krishi Sakhi (CRP) will be monitored real time on the IT portal.	- 2 Krishi Sakhis (CRP) per cluster - 16 days (5 hours per day) per month as per actuals @ ₹300 per day + ₹200 for TA per month as per actuals - ₹1.2 Lakhs per Krishi Sakhis (CRP) for 2 years	2.40	36,000.00
B	Block Level Mission Implementation : Awareness generation at GP - Attended by Gram Panchayat leaders, Farmers, SHG women, etc. - 4 programs per GP per year - 50-75 participants per program	Per program cost - ₹2000/- - 1 Resource person @ ₹500/-, all inclusive - Refreshments @ ₹20/ for 50 participants = ₹1000/- - Miscellaneous (Pamphlets, banner, stationary etc) @ ₹500/-	0.16	2,400.00
C	Output Based incentive to approximately 18.75 Lakh trained willing farmers to practice NF, train more farmers, upkeep of livestock (preferably local breed of cow)/ preparation of NF inputs (including purchase of mixing & storage containers, etc.)/ purchase of NF inputs from BRC (approximately 125 farmers per cluster)	- ₹4000/- per acre per year for a cluster of 50 Ha land for 2 years (₹300 per month to practice NF, train more farmers, upkeep of livestock/ preparation of inputs/ purchase of NF inputs from BRC and ₹400 per year as one time support for procurement of drums, etc.) - Maximum incentive up to 1 acre per farmer	10.00	150,000.00
D	NF Certification for 18.75 Lakh trained willing farmers	- ₹2100/- per Ha	1.05	15,750.00
E	Block Level Mission Implementation : Orientation programs for farmers to	Per activity cost = ₹1200/- - TA to Block Level coordinator travel @ ₹200/-	0.048	720.000

	express willingness to initiate NF - 2 orientation programs per year - 25-30 participants per program	- Refreshments @ ₹20/- per participants - Miscellaneous (Pamphlets, banner, stationary, etc.) @ ₹500/-		
F	Provide study materials, farm diary, FAQ booklet etc provided to trained willing farmers (~18.75 lakh)	@ ₹200/- per farmer for a clusters of 125 farmers - Farm dairy @ ₹50/- - Study material @ ₹100/- - FAQ booklet @ ₹50/-	0.25	3,750.00
G	Support for mobile devices for Krishi Sakhis (CRP)	- Need based one time cost @ ₹4,000 per Krishi Sakhi/ (CRP)	0.08	1,200.00
	Total per Cluster (A + B + C + D + E + F + G)		13.99	209,820.00

23. Expected Outcomes

- 23.1 Rejuvenation and sustainability of Mother Earth for future generations
- 23.2 Builds climate resilience in agriculture across Gram Panchayat against droughts, floods, cyclones, etc.
- 23.3 Reduction in chemical input usage
- 23.4 Improvement in soil health and fertility through in situ generation of organic matter from multi crop systems.
- 23.5 Invites a wide range of biodiversity such as beneficial insects, birds, etc. which are beneficial for on farm pollination, natural pest and disease management, etc.
- 23.6 Provides safe, nutritious and chemical-free food to farmer family and local consumers
- 23.7 Reduced burden of diseases to farmer families due to reduction in exposure to chemicals
- 23.8 Higher carbon sequestration, enabling farmers to access Carbon Credit markets
- 23.9 Savings for Government on account of fertilizer subsidy

24. Expected Outputs

- 24.1 15,000 Gram Panchayats evolve NF model clusters
- 24.2 7.5 Lakh Ha area initiated under NF
- 24.3 18.75 Lakh trained willing farmers initiate NF
- 24.4 Outreach to 1 crore farmers about NF
- 24.5 30,000 trained Krishi Sakhis (CRP) capable of providing farmer-extension services on Natural Farming

- 24.6** 10,000 need based Bio-Input Resource Centers (BRC) developed in entrepreneurial mode across the country
- 24.7** ~2000 NF NF model demonstration farms developed at farmers' fields and on-station at KVKs, and AUs across the country for scientific documentation and development of agroecology specific packages of practices for different NF models.
- 24.8** Scientifically supported certification system for NF produce
- 24.9** National brand for naturally grown chemical free produce

Indicative Process Guideline for Block Level Mission Implementation

The Block Level Mission Implementation will be carried out by the Block Level Monitoring Committee constituted under the chairpersonship of Block Development Officer (BDO), and Block Technical Manager/ Assistant Technical Manager (ATMA), Assistant Director of Agriculture/ Block Agriculture Officer, practicing NF farmers and representatives from other allied Departments as members, etc. The Committee can choose to appoint a Block Implementation Agency (BIA) like federations under SRLM/ FPOs/ PACS/ NGOs. The indicative process guidelines for the Block level Mission implementation and the criteria of selecting an NGO as a BIA are given below. Any other activities with regards to the Mission implementation may be added suitably.

1. Activities for Block Level Mission Implementation :

1.1. Generate willingness of Gram Panchayat (GP) to participate in the Mission

- 1.1.1.** Awareness generation meetings in coordination with ATMA, SRLM, practicing NF farmers, KVKs, AUs, LNFI, etc.
- 1.1.2.** Engage local leaders, CBOs, and other stakeholders to support and participate in the meetings.
- 1.1.3.** Support GPs in the process of filling the willingness application.

1.2. Hand Holding and Support services at Cluster level

- 1.2.1.** Coordinate the process of identification of potential Krishi Sakhi (CRP) from the willing GPs in collaboration with CBOs and inform the District level committee for selection of Krishi Sakhi (CRP).
- 1.2.2.** Coordinate training and field visits in consultation with KVK/ AU/ LNFI, FMT and Krishi Sakhi (CRP) at the clusters.
- 1.2.3.** Support Krishi Sakhi (CRP) in conducting meetings with farmers and other stakeholders for ensuring cohesiveness in Mission implementation.
- 1.2.4.** Regularly visit each village of the cluster every month to monitor farm activities and understand the challenges faced by the farmers.
- 1.2.5.** Facilitate the solutions for challenges faced by farmers through experts from KVK/ AU/ LNFI.
- 1.2.6.** Coordinate and support Krishi Sakhi (CRP) in conducting the Awareness generation meetings, demonstration activities, crop cutting experiments, field visits, training programs, etc.
- 1.2.7.** Support the Krishi Sakhi (CRP) in maintaining the farmer diary.

1.3. Documentation and reporting

- 1.3.1.** Prepare a comprehensive GP level due diligence report highlighting the land type, crops grown, irrigation source, number of practicing NF farmers, quantity of fertilizers and other chemical inputs used, etc. This exercise must be carried out at the start of the Mission implementation in GP.
- 1.3.2.** Prepare season wise action plans for the cluster and submit it to the District Level Monitoring Committee.
- 1.3.3.** Work with training institutions (KVK/ AU/ LNFI) in preparing the season wise training calendar for their respective clusters.
- 1.3.4.** Support Krishi Sakhi (CRP) in documenting data of farmers attending the training programs, demonstrations, etc. on the NMNF IT portal.
- 1.3.5.** Facilitate soil testing of the soil samples at the soil testing labs collected from the fields of trained willing farmers and distribute Soil Health cards.
- 1.3.6.** Collection of data and information related to the implementation, management and monitoring of the project and submission of information in online portal.
- 1.3.7.** Prepare Monthly progress report of consolidated activities.
- 1.3.8.** Enter data of all activities into the NMNF IT portal.
- 1.3.9.** Prepare quarterly progress reports of the cluster activities.

1.4. Monitoring and evaluation

- 1.4.1.** Closely monitor the activities at cluster as per the Cluster level action plan submitted.
- 1.4.2.** Verify the monthly work done reports and endorsement documents of Krishi Sakhi (CRP) at cluster level.
- 1.4.3.** Coordinated with District Administration for release of payment to Krishi Sakhi (CRP) and trained willing farmers as per their performance and outputs.
- 1.4.4.** Support Training Institution in monitoring the outputs of the FMT.
- 1.4.5.** Support Training Institution/ District Level Monitoring Committee in verifying that the farm of FMT continues to be an NF model demonstration farm.
- 1.4.6.** Prepare half yearly field assessment reports highlighting strengths, challenges, and areas for improvement, document best practices followed at the cluster level, etc.

2. Selection Criteria in case of appointing a Non-Government Organisation (NGO) as a Block Implementing Agency

SNo	Details	Verification process
1.	Should have prior experience of NF for at least 3 years and should have a good reputation for working in the	- Submit proof of engagement such as a Work Order / Engagement Letter / Completion Certificate / LoA, etc.

	field.	- Field verification at ongoing project sites
2.	Should have prior experience of working with local Community Based Organisation (CBOs) in GP/Block like SHG, FPO, PACS, etc.	Submit an attested certificate from the CBO certifying the work and engagement details .

Indicative Process Guidelines for Centers' of Natural Farming (CoNF)

The Centers of Natural Farming (CoNF) will impart training on all aspects of Natural Farming for the trainers of the Mission. The indicative criteria and process guidelines are given below. Any other activities pertaining to the Mission implementation may be added suitably.

1. Selection Criteria

- 1.1. Has Natural Farming model farms for training and demonstrations purposes
- 1.2. Has proven experience of training farmers, Scientists, Government Officials
- 1.3. Has ongoing research initiatives on Natural Farming, working on farmers' fields
- 1.4. Has associated practicing NF farmers, Scientists and NF experts to conduct training programmes
- 1.5. Has facilities to host participants for residential trainings (at least more than 300 participants)

2. Activities to be undertaken

- 2.1. Continuous rounds of training to Scientists, State/District Government Officials and Farmer Master Trainers

3. Suggested list of CoNF :

- 3.1. Gurukul Kurukshetra, Haryana
- 3.2. Indo-German Global Academy for Agroecology Research and Learning (IGGAARL), Andhra Pradesh
- 3.3. Gujarat Natural Farming Science University (GNFSU), Halol, Gujarat
- 3.4. Dr. Yashwant Singh Parmar University of Horticulture and Forestry, Solan, Himachal Pradesh
- 3.5. University of Agricultural Sciences (UAS), Dharwad, Karnataka
- 3.6. Tamil Nadu Agricultural University (TNAU), Tamil Nadu
- 3.7. Birsa Agricultural University (BAU), Jharkhand
- 3.8. Regional Centre of Organic and Natural Farming, Imphal, Manipur

Indicative Process Guidelines for Farm Workers at NF Model Demonstration Farms

Each Training Institution (KVK and AU) will be provided with one (1) farmer worker to develop the NF model demonstration farm and support the institution during the training programs. The indicative process guidelines for the farm worker are given below. Any other activities pertaining to the Mission implementation may be added suitably.

1. Selection Criteria :

- 1.1. Must preferably be a Krishi Sakhi/ Self Help Groups (SHGs) member.
- 1.2. Should have been practicing NF for a minimum of 1 year and be well versed with NF.
- 1.3. Should reside near the associated training centre (KVK/ AU).
- 1.4. Should have good communication skills and be able to read and write in the local language (at least 5th class pass).
- 1.5. Preferably have undergone prior training on NF.
- 1.6. Should be committed to support in development and maintenance of NF Model Demonstration Farm.

2. Selection Process :

- 2.1. Farm Worker, who is endorsed by the local village organisation. shall be selected by the respective KVK/ AU.
- 2.2. The training institution and village organisation shall be responsible for monitoring the work of the Farm Worker and ensuring regular payment of wages in Aadhar authenticated Bank Accounts.

3. Roles and Responsibilities :

- 3.1. Support in establishment and regular maintenance of NF Model Demonstration Farm at on station plot of KVKs/ AUs.
- 3.2. Carry out following farming activities :
 - 3.2.1. Land preparation, Sowing, and farm management.
 - 3.2.2. Preparation and application of on farm inputs for Soil health management (Nutrient management).
 - 3.2.3. Preparation and application of on farm inputs for Plant health management.
 - 3.2.4. Identification and control of Pests, Diseases & Weeds.
 - 3.2.5. Preparation of bio-inputs like Beejamrut, Jeevamrut, Neemastra, Dashparni, etc.
 - 3.2.6. Carry out harvesting and post harvesting activities.

- 3.3. Support the Scientists and FMT during training and demonstration activities such as preparation of on-farm inputs, etc.
4. The payments to the farm worker should be made to their Aadhar authenticated Bank Accounts.

Indicative Process Guidelines for Local Natural Farming Institutions (LNFI)

The Local Natural Farming Institutions (LNFI) will impart training on all aspects of Natural Farming implementation for the successful implementation of the Mission. The indicative criteria and process guidelines are given below. Any other activities pertaining to the Mission implementation may be added suitably.

1. **Selection Criteria :**
 - 1.1. Can be a practising NF farmer or NF training center or Community of NF farmers (like SRLM groups, etc.).
 - 1.2. Must have a well established NF model demonstration farm, practicing NF for a minimum of 3 years.
 - 1.3. Should have a minimum of 10 associated practising NF farmers, who :
 - 1.3.1. Should be practicing NF for a minimum of 2 years and must have a well established NF model demonstration farm..
 - 1.3.2. Should have undergone formal or informal training on NF with KVK / AU/ NF expert institutions..
 - 1.3.3. Should be associated with LNFI in training and extension activities.
 - 1.3.4. Must have on-farm problem identification and quick decision making skills..
 - 1.3.5. Preferably have experience in conducting field visits, and field demonstration activities..
 - 1.4. The Institution must continue to practice NF and maintain their farm as a NF model demonstration farm.
 - 1.5. The institution must have prior experience in providing training on NF.
 - 1.6. Should have training facilities to host at least 50 people at a time.
 - 1.6.1. Training space that can comfortably host 50 people, with options for group activities, individual seating, demonstrations and presentations.
 - 1.6.2. Basic Audio and Video equipment like a projector and screen are available
 - 1.6.3. Rooms or dormitory-style accommodations with basic necessary amenities (Beds, Bathrooms etc.) are available as per state training centre norms.
 - 1.6.4. A large dining area that can serve meals at scheduled times
 - 1.7. Institutions must identify an FMT who will be trained at CoNF or other training institutions.
 - 1.8. Should be able to maintain training program records and accounts.
 - 1.9. Must be willing and able to update Mission implementation activities on NMNF IT portal.

2. Selection Process :

- 2.1. States in consultation with the District and Block Level Monitoring Committee, KVKs, AUs, etc. shall identify LNFI from near the Districts/ Block/ Gram Panchayats selected for Mission implementation.
- 2.2. LNFI will be onboarded by the District Level Monitoring Committee.
- 2.3. The District Level Monitoring Committee will assess and suitably provide necessary need based training aids for the LNFI.
- 2.4. Upon identification of the LNFI, they shall be notified and on-boarded by the State NF Cell. The FMT identified by the LNFI shall then be trained at Centres' of Natural Farming (CoNF).
- 2.5. The identified LNFIs should be connected with

3. Roles and Responsibilities :

- 3.1. Maintain an on-farm NF model demonstration farm with location specific crops and NF practices.
- 3.2. Maintain regular farm diary records.
- 3.3. Coordinate preparation of training calendar with Block Level Monitoring Committee for their respective linked NF cluster farmers.
- 3.4. Conduct training programmes and field visits in coordination with District/ Block Level Monitoring Committee, ATMA, Krishi Sakhis (CRP), etc. as planned in the State level annual action plan.
- 3.5. Carry out necessary arrangements for the training programmes such as preparation of inputs like Jeevamrut, Ghan jeevamrut, Beejamrut, etc.
- 3.6. Provide continuous hand holding support to trained willing farmers, Krishi Sakhis (CRP) and Block Level Monitoring Committee in the linked NF clusters.
- 3.7. Maintain records of training programmes conducted and upload training program reports on the NMNF IT portal.
- 3.8. Conduct regular field visits to linked clusters :
 - 3.8.1.1. To handhold trained willing farmers in practicing NF package of practices, preparation of on-farm inputs, etc.
 - 3.8.1.2. To handhold and support Krishi Sakhi (CRP) in training, awareness generation, demonstrations, preparation of on-farm inputs like Jeevamrut, Beejamrut, etc.
 - 3.8.1.3. Carry out extension of NF across the clusters with support of the local ATMA team, Krishi Sakhis (CRP), etc.

4. Monitoring Process :

- 4.1. Activities conducted by the LNFI shall be monitored regularly by the District Level Monitoring Committee and in case of unsatisfactory performance the necessary action should be initiated for replacement.

Indicative Process Guidelines for Farmer Master Trainer (FMTs)

The Farmer Master Trainer will maintain his/her NF farm as NF model demonstration farm to thereby provide training and handholding support to the Krishi Sakhis (CRP), Trained willing farmers to ensure that all the NF package of practices and preparation of on farm inputs like Beejamrut, Jeevamrut, etc. are followed. Any other activities with regards to the Mission implementation may be added suitably. The indicative process guidelines are given below.

1. Selection criteria

- 1.1. Must be practicing NF for a minimum of 3 years with a well established NF farm.
- 1.2. Should have good communication skills and be able to read and write in the local languages (at least 7th class pass).
- 1.3. Once selected, the FMT should be willing to undergo training at Centres' of Natural Farming or other training institutions.
- 1.4. Should be committed to provide training, conduct exposure visits, visit the clusters for hand-holding of farmers and Krishi Sakhis (CRP) through demonstration, preparation of on-farm inputs, etc.
- 1.5. Should continue to practice NF and maintain their farm as a NF model demonstration farm for training other farmers.
- 1.6. Should be aware of local contexts and communicate in local language.
- 1.7. Preferably belong to the same Block/ District that is located near the associated training centre (KVK/ AU/ LNFI).
- 1.8. Preferably have prior experience in providing training on NF.
- 1.9. Krishi Sakhi (CRP) are also eligible to become FMTs.

2. Selection & Monitoring Process

- 2.1. FMT shall be nominated by the District Level Monitoring Committee.
- 2.2. The Training Institution shall be responsible for monitoring the work of the FMT along with the Block Level Monitoring Committee.
- 2.3. FMT's own farm should continue to be a NF model demonstration farm and must be verified every year by agencies as decided by the District Level Monitoring Committee.

3. Roles and Responsibilities

3.1. Development of NF Model Demonstration Farm

- 3.1.1.** Design the NF model demonstration farms at on station plots of KVK/ AU and at fields of 3 farmers.
- 3.1.2.** Train, guide and work with the farm worker in developing and maintenance of the NF model demonstration farm.
- 3.1.3.** Conduct regular monitoring and maintenance of NF model demonstration farms.

3.2. Trainings to Willing Farmers, Krishi Sakhi (CRP) and Field visits

- 3.2.1.** Facilitate visits to NF model demonstration farms associated with the training institution (KVK/ AU/ LNFI).
- 3.2.2.** Conduct training of trained willing farmers and Krishi Sakhis (CRP) at the NF model demonstration farms of training institutions (KVK/ AU/ LNFI).
- 3.2.3.** Conduct field visits to clusters for extension of NF and provide handholding support to Krishi Sakhi (CRP) and trained willing farmers in practicing NF.
- 3.2.4.** Support Krishi Sakhis (CRP) in monitoring field level activities and maintenance of farm diary.

- 3.3.** Details of training, their activities and progress of NF model demonstration farms must be updated in the NMNF IT portal.

- 4.** Output based incentive to the FMT should be paid to their Aadhar authenticated Bank Accounts.

Indicative Process Guidelines for Krishi Sakhis (CRPs)

The Krishi Sakhi/ CRPs will form the backbone for Mission implementation at the Gram Panchayat. Two (2) Krishi Sakhi (CRPs) will be deployed at each cluster. The indicative process guidelines for the Krishi Sakhi (CRP) are given below. These can be further expanded suitably for Mission implementation.

1. Selection criteria :

- 1.1. Must be a Krishi Sakhi/ Women SHG member.
- 1.2. Krishi Sakhis must have experience in NF for a minimum of 1 year. If no such Krishi Sakhi is found, then any other active SHG member, who is keen to learn, practice NF and is willing to take up the role can be selected. In both the instances the farms of the Krishi Sakhi (CRP) will be used as NF model demonstration farms
- 1.3. Should provide an undertaking that she/he will practice NF and prepare their farm as NF model demonstration farm in the next two years.
- 1.4. Must be active and able to give time in the cluster for all the mission implementation activities.
- 1.5. Must preferably be a resident of the respective cluster.
- 1.6. Krishi Sakhi (CRP) must be endorsed by the local Village Organisations(VO).
- 1.7. Should have good communication skills and be able to read and write in the local languages (at least 7th class pass).
- 1.8. Preferably have prior experience in generating community-wide awareness
- 1.9. Must have basic knowledge of using smartphones/ tab.
- 1.10. Should be committed to undergo training programs, exposure visits, etc.

2. Selection and Monitoring process :

- 2.1. The District level Monitoring Committee in coordination with the local village organisation (VO) will select the Krishi Sakhi (CRP).
- 2.2. Selected Krishi Sakhi (CRP) will be trained at NF model demonstration farms at KVK/ AU/ LNFI, etc.
- 2.3. The Krishi Sakhi/ CRPs shall be continuously monitored by the associated community based organisations (CBO) like VO. The CBO must submit an attested document endorsing the work done by the Krishi Sakhi (CRP) on a monthly basis to the Block Level Monitoring Committee.
- 2.4. The Block Level Monitoring Committee will verify the activities of Krishi Sakhi (CRP) on the IT portal on a monthly basis.

3. Roles and Responsibilities :

3.1. Mobilization of Farmers

- 3.1.1.** Regularly conduct community-wide awareness generation for GP members, SHGs/ FPOs/ PACS and other CBO members, School students, Anganwadi centers, Health workers and other community members.
- 3.1.2.** Mobilise farmers to take up NF.
- 3.1.3.** Conduct regular registration & enrollment of willing farmers
- 3.1.4.** Conduct demonstrations of preparation of on-farm inputs like Jeevamrut, Beejamrut, etc. and trainings to willing farmers at GP.
- 3.1.5.** Ensure participation and attendance of willing farmers for all training programs.
- 3.1.6.** Work with trained willing farmers and form clusters.

3.2. Handhold Trained Willing Farmers in practicing NF package of practices

- 3.2.1.** Visit farms of trained willing farmers and support them in preparation and application of NF on-farm inputs such as Jeevamrut, Beejamrut, etc.
- 3.2.2.** Conduct regular visits to farms of trained willing farmers and handhold them in following up and ensuring practice of all NF package of practices.
- 3.2.3.** Support the community to establish Bio-Input Resource Centers (BRC) units and link established BRC units with willing farmers.
- 3.2.4.** Collect soil samples for Soil Health testing, assess physical changes in soil parameters, and provide NF based advisories for improving soil health.
- 3.2.5.** Mobilize trained willing farmers for training at NF model Demonstration Farms of KVK/ AU/ LNFI.
- 3.2.6.** Mobilize farmers for training by FMT and scientists from KVK/ AU/ LNFI at cluster level.
- 3.2.7.** Train 6 more farmers and demonstrate preparation of on-farm inputs like Jeevamrut, Beejamrut, etc. at farms of trained willing farmers.
- 3.2.8.** Conduct crop cutting experiments on the fields of trained willing farmers.
- 3.2.9.** Coordinate with the willing farmers for certification, marketing and branding of naturally grown chemical free produce.

3.3. Collect and Upload periodic data of cluster level activities on NMNF IT Portal

- 3.3.1.** Field level data of the trained willing farmer to track NF package of practices followed, soil health card, etc.
- 3.3.2.** Progression of trained willing farmers - no. of crops sown, area under NF, etc.
- 3.3.3.** Training and on-field demonstration activities in the cluster.
- 3.3.4.** Enrollment and registration of willing farmers.
- 3.3.5.** Regularly update the calendar of activities and work done.

- 4.** The output based incentive to the Krishi Sakhis (CRP) should be paid to their Aadhar authenticated Bank Accounts.

5. Following are the tentative calendar of activities and targets for Krishi Sakhi (CRP),

S. No.	Activities	Target outputs per Krishi Sakhi (CRP) (Season wise)			
		Kharif	Rabi	Kharif	Rabi
1.1	Generate community wide awareness on NF.	60 farmers	80 farmers	100 farmers	120 farmers
1.2	Mobilise and register willing farmers.	12 farmers	48 farmers	12 farmers	48 farmers
1.3	Carry out demonstration activities, preparation in on-farm inputs and training to willing farmers at Gram Panchayat.				
2.1	Visit fields of trained willing farmers for hand holding support and data collection.	12 Initiated fields	24 Initiated fields 12 Intensified fields	12 Initiated fields 36 Intensified fields	12 Initiated fields 48 Intensified fields
					Total 60 farmers
2.2	Field visits to farms of trained willing farmers for field experiments like crop cutting experiments.	2 plots	2 plots	5 plots	5 plots
3.1	Coordinate training of trained willing farmers at KVK/ AU/ LNFI.	12 farmers		12 farmers	
3.2	Mobilize willing farmers for training by FMT, Scientists, NF experts, etc. from KVK/ AU/ LNFI at Gram Panchayat.	24 farmers	24 farmers	24 farmers	24 farmers

Indicative Process Guidelines for Trained Willing Farmers

The trained willing farmer will form the backbone of NF activities in the cluster. 125 trained willing farmers will be enrolled in the scheme from each Cluster in the first 2 years. The indicative process guidelines for the trained willing farmers are given below. These can be further expanded suitably for Mission implementation.

1. Selection criteria :

- 1.1. Willing to practice few or all NF packages of practices, to start within a portion of land.
- 1.2. Must be a resident of the Gram Panchayat.
- 1.3. Is willing to attend awareness generation meetings, training and demonstration on NF practices at KVKs/ AU/ LNFI and at the Gram Panchayat.
- 1.4. Willing to create awareness, train and handhold 6 more farmers to initiate NF package of practices.
- 1.5. Must ensure that their farm becomes a NF model demonstration farm and can be used for training 6 more farmers to initiate NF.

2. Roles and Responsibilities :

- 2.1. Attend awareness generation meetings on NF at Gram Panchayat level.
- 2.2. Initiate NF practices in a portion of their land.
- 2.3. Attend training on NF at KVKs/ AU/ LNFI.
- 2.4. Form NF clusters by creating awareness, training and bringing in 6 more farmers to initiate NF packages of practices.
- 2.5. Conduct outreach activities for the 6 more farmers with support from the Krishi Sakhis (CRP), FMT, Scientists (KVKs/ AUs), ATMA officials etc.
- 2.6. From July 2025 onwards, the 18.75 lakh trained willing farmers will further train 6 more farmers so as to reach approximately 1 crore farmers by March 2026.

3. The progression journey of a farmer's transition towards natural farming

3.1. Aware :

- 3.1.1. Continuous rounds of awareness generation activities, demonstrations, field exposure meetings, trainings etc shall be conducted across the Gram Panchayat

3.2. Initiate NF practices :

- 3.2.1. The trained farmers will initiate practicing NF in some portion of their land after the first season.

- 3.2.2. Indicators for Adoption of basic NF practices at this stage are : Pre Monsoon Dry Sowing, Application of on farm inputs like Beejamrut, Jeevamrut, Neemastra etc.

3.3. Intensify NF practices :

- 3.3.1. Farmers who have initiated NF for more than 3 years will intensify NF practices fully/partially in the same land or extend it to large portion of landholding while refining their techniques
- 3.3.2. Start generating awareness on NF to other farmers.

3.4. Transform to full land holding :

- 3.4.1. Farmers who have intensified NF for more than 4 years in partial landholding will transform their entire landholding from conventional agriculture practices to Natural Farming practices
- 3.4.2. Start training other farmers on NF.

4. Output based incentive :

- 4.1. ₹4000/- per acre per year for 2 years (maximum incentive for up to 1 acre per farmer) will be released in installments to the aadhar authenticated bank accounts of trained willing farmers as per the following norms mentioned :

Year	Installment	Timeline	Amount (INR)	Outputs Expected
Year 1	1st	August	2000/-	a. Participate the trainings at KVK/ AU/ LNFI and clusters b. Purchase of drums, mixing & storage containers, etc. c. Upkeep of livestock d. Prepare on farm inputs like Beejamrut, Jeevamrut, Neemastra etc. e. Purchase necessary inputs from BRC f. Start NF good practices like Pre Monsoon Dry Sowing (PMDS)
	2nd	February	2000/-	a. Prepare on farm inputs like Beejamrut, Jeevamrut, Neemastra etc. b. Practicing Multi Cropping system and continue

				adopting good NF practices. c. Purchase inputs from BRC.
Year 2	3rd	Mid Kharif	2000/-	a. Continue practicing NF to develop into an NF model demonstration farm. b. Generate awareness and train 6 more farmers at the NF model demonstration farms.
	4th	Mid Rabi	2000/-	a. Continue practicing NF in their farms. b. Train and handhold 6 more farmers to initiate NF practices such as Pre Monsoon Dry Sowing, Beejamrut, Jeevamrut etc.
