

### III. EXTENSION ON NATURAL FARMING

During the may outreach activities have been carried out including bench mark survey of the farmers. The abstract of the extension activities is as under.

#### Abstract of technical and outreach activities conducted

(2018-19, 2019 -20, 2020-21 & 2021-22)

| Sl. No. | Particulars   | No. of events | No. of participants/<br>Beneficiaries |
|---------|---|---------------|---------------------------------------|
| 1.      | Number of farmers surveyed and selected                                   | -             | 1183/1149                             |
| 2.      | Area covered under benchmark survey and selected (ha)                     | 1089/1027.52  | -                                     |
| 3.      | Zonal level seminar conducted to Farmers                                  | 01            | 250                                   |
| 4.      | Training conducted to farmers   | 43            | 1170                                  |
| 5.      | Training conducted to CA and CRP's  | 03            | 111                                   |
| 6.      | Training conducted to Officials   | 01            | 08                                    |
| 7.      | Workshop conducted to farmers   | 08            | 372                                   |
| 8.      | Workshop conducted to CA and CRP's  | 03            | 111                                   |
| 9.      | Demonstrations conducted to farmers (Inputs preparation)                  | 45            | 1314                                  |
| 10.     | Demonstrations conducted to CA & CRP's and officials (Inputs preparation) | 02            | 67                                    |
| 11.     | Crop demonstrations and observation recording in farmers field            | 45            | -                                     |
| 12.     | Field days conducted  | 11            | 951                                   |
| 13.     | Exposure visits organized to farmers                                      | 15            | 871                                   |
| 14.     | Exposure visits organized to CA/CRP' and RA's                             | 02            | 54 (46+8)                             |
| 15.     | Exposure visits organized to Officials (ORP team members)                 | 01            | 02                                    |
| 16.     | Webinar conducted to Farmers  | 01            | 25                                    |
| 17.     | ORP Group meeting conducted   | 02            | All members                           |

|     |  |      |     |
|-----|--|------|-----|
| 18. | Radio talk given                                 | 05   | -   |
| 19. | Presentation of results in workshops             | 03   | -   |
| 20. | Soil health card distribution to ZBNF farmers    | 12   | 720 |
| 21. | Popular articles published                       | 06   | -   |
| 22. | Training manuals prepared                        | 03   | -   |
| 23. | PoP for Horticultural crops prepared             | 01   | -   |
| 24. | Booklets published                               | 01   | -   |
| 25. | Folders published                                | 05   | -   |
| 26. | Soil Health card prepared                        | 01   | -   |
| 27. | Charts prepared                                  | 10   | -   |
| 28. | Success stories of ZBNF farmers written          | 05   | -   |
| 29. | Soil samples collected (no's)                    | 1473 | -   |
| 30. | Soil samples analyzed (no's) (for 13 parameters) | 1025 | -   |
| 31. | Field trials conducted (no's) (Continued)        | 12   | -   |
| 32. | Trials conducted by research scholars (SRF)      | 06   |     |

**b. Contact person with designation and contact details**

Dr. Anand B. Mastiholi  
Professor (Agronomy) and Head, NF project  
Regional Horticultural Research and Extension Centre,  
NH 4 Bye Pass, Opp. Narendra Cross, Kumbapur, DHARWAD-580 005, Karnataka

e-mail: [anandbmasti@gmail.com](mailto:anandbmasti@gmail.com)

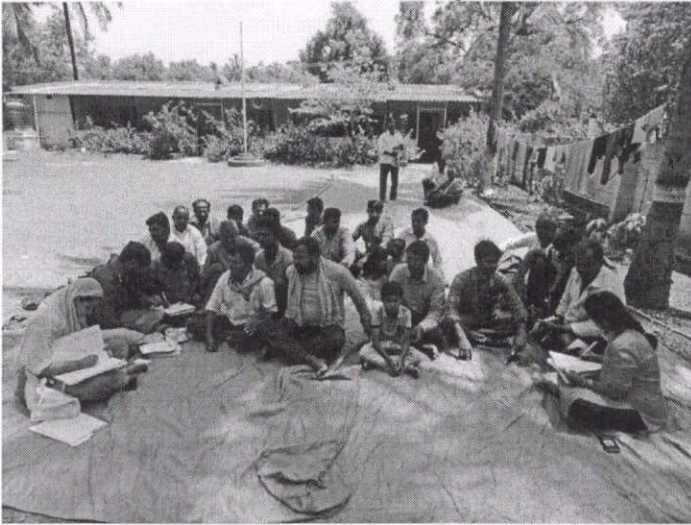
Cell: 9448860557

**C. Training Modules developed:**

On production and plant protection aspects, training materials developed and trainings given to stake holders.

*[Handwritten signature]*

**Benchmark survey**



**Training to CA/CRP's**



**Exhibitions conducted at Krishimelas**



**Exposure visits conducted to Farmers/Farm women**



**Exposure visits conducted to CA/CRP's and RA's**



**Demonstrations on NF inputs preparation**



**Field days conducted**



**Field visits to NF farmers' fields**



**Visit of Officials to NF trial plots**



**Method demonstrations on the preparation of NF inputs to CA/CRP's**



**Zonal level seminar conducted on NF**



**Zonal level seminar**



**Distribution of soil health cards at Farmers' doorstep**



**Observation recording in NF practicing farmers' field on**



**Training to Farmers on NF**



**Demonstration to Farmers on NF inputs preparation**



**Exposure visits of Scientists to NF farmers fields**



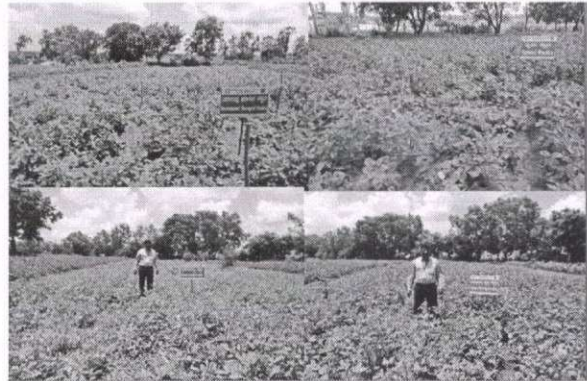
**Visit of Officials to NF Office**



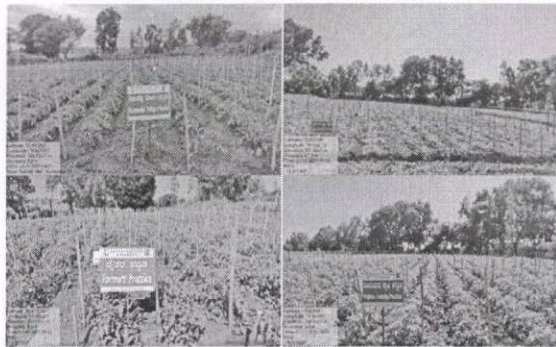
**ORP meeting**



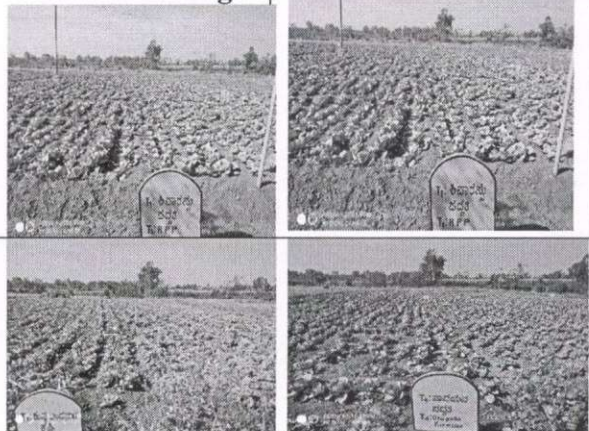
**Trial on cluster bean**



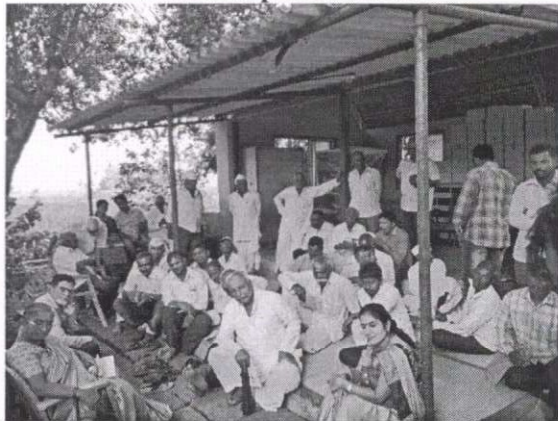
**Trial on Tomato**



**Trial on Cabbage**



**Workshop to farmers**



**Publications**



**Visit of Students to NF office and plots**



**Visit of students**



**Visit of progressive farmers to NF trials**



**Visit of farmers to NF trial plots**



**Visit of farmers to trial plots**



**Exhibitions on method demonstrations**



